

TEST BANK Exploring Anatomy & Physiology in the Laboratory

4/E Erin Amerman.

Unit 01 Introduction to Anatomical Terms

1. Which of the following statements accurately defines *anterior*?

A) Toward or on the back of the body
B) Toward or on the front of the body
C) Away from the head or toward the tail
D) Toward the body surface; closer to the skin

ANS: B PTS: 1 TOP: Unit 01 Pre-Lab Exercise

2. Which of the following statements accurately defines *posterior*?

A) Toward or on the back of the body
B) Away from the body surface; further away from the skin
C) Away from the head or toward the tail
D) Toward the body surface; closer to the skin

ANS: A PTS: 1 TOP: Unit 01 Pre-Lab Exercise

3. Which of the following statements accurately defines *superior*?

A) Away from the body surface; further away from the skin
B) Toward or on the back of the body
C) Away from the head or toward the tail
D) Toward the head or away from the tail

ANS: D PTS: 1 TOP: Unit 01 Pre-Lab Exercise

4. Which of the following statements accurately defines *inferior*?

A) Toward the body surface; closer to the skin
B) Toward or on the back of the body
C) Away from the head or toward the tail
D) Away from the body surface; further away from the skin

ANS: C PTS: 1 TOP: Unit 01 Pre-Lab Exercise

5. Which of the following statements accurately defines *proximal*?

A) Toward the body surface; closer to the skin
B) Away from the head or toward the tail
C) Closer to the point of origin, generally of a limb
D) Toward or on the front of the body

ANS: C PTS: 1 TOP: Unit 01 Pre-Lab Exercise

6. Which of the following statements accurately defines *distal*?

A) Toward the body surface; closer to the skin
B) Away from the body surface; further away from the skin
C) Closer to the point of origin, generally of a limb
D) Away from the point of origin, generally of a limb

ANS: D PTS: 1 TOP: Unit 01 Pre-Lab Exercise

7. Which of the following statements accurately defines *medial*?

- A) Closer to the midline (imaginary line running down the middle of the body)
- B) Away from an imaginary line running around the middle of the body
- C) Closer to an imaginary line running around the middle of the body
- D) Away from the midline (imaginary line running down the middle of the body)

ANS: A PTS: 1 TOP: Unit 01 Pre-Lab Exercise

8. Which of the following statements accurately defines *lateral*?

- A) Closer to the midline (imaginary line running down the middle of the body)
- B) Away from an imaginary line running around the middle of the body
- C) Closer to an imaginary line running around the middle of the body
- D) Away from the midline (imaginary line running down the middle of the body)

ANS: D PTS: 1 TOP: Unit 01 Pre-Lab Exercise

9. Which of the following statements accurately defines *superficial*?

- A) Toward the body surface; closer to the skin
- B) Away from the head or toward the tail
- C) Toward or on the front of the body
- D) Away from the body surface; further away from the skin

ANS: A PTS: 1 TOP: Unit 01 Pre-Lab Exercise

10. Which of the following statements accurately defines *deep*?

- A) Toward the body surface; closer to the skin
- B) Away from the body surface; further away from the skin
- C) Toward the torso of the body
- D) Away from the point of origin, generally of a limb

ANS: B PTS: 1 TOP: Unit 01 Pre-Lab Exercise

11. Which of the following statements accurately defines *cranial cavity*?

- A) The area encased by the vertebrae which contains the spinal cord and cerebrospinal fluid
- B) The area inferior to the diaphragm that extends into the bony pelvis
- C) The area superior to the diaphragm that is encased by the ribs
- D) The area encased by the skull which contains the brain and cerebrospinal fluid

ANS: D PTS: 1 TOP: Unit 01 Pre-Lab Exercise

12. Which of the following statements accurately defines *vertebral cavity*?

- A) The area encased by the vertebrae which contains the spinal cord and cerebrospinal fluid
- B) The area inferior to the diaphragm that extends into the bony pelvis
- C) The area superior to the diaphragm that is encased by the ribs
- D) The area encased by the skull which contains the brain and cerebrospinal fluid

ANS: A PTS: 1 TOP: Unit 01 Pre-Lab Exercise

13. Which of the following statements accurately defines *thoracic cavity*?

- A) The area encased by the vertebrae which contains the spinal cord and cerebrospinal fluid

- B) The area inferior to the diaphragm that extends into the bony pelvis
- C) The area superior to the diaphragm that is encased by the ribs
- D) The area encased by the skull which contains the brain and cerebrospinal fluid

ANS: C

PTS: 1

TOP: Unit 01 Pre-Lab Exercise

14. Which of the following statements accurately defines *abdominopelvic cavity*?

- A) The area encased by the vertebrae which contains the spinal cord and cerebrospinal fluid
- B) The area inferior to the diaphragm that extends into the bony pelvis
- C) The area superior to the diaphragm that is encased by the ribs
- D) The area encased by the skull which contains the brain and cerebrospinal fluid

ANS: B

PTS: 1

TOP: Unit 01 Pre-Lab Exercise

15. Which of the following statements accurately defines *serous membrane (parietal and visceral layers)*?

- A) Double-layered membrane that produces serous fluid to lubricate the organs in the cavity
- B) Membrane surrounding the heart
- C) Membrane surrounding the lungs
- D) Membrane surrounding the abdominopelvic cavity

ANS: A

PTS: 1

TOP: Unit 01 Pre-Lab Exercise

16. Which of the following statements accurately defines *midsagittal plane*?

- A) A section made parallel to the body's longitudinal axis; divides the body into an anterior part and a posterior part
- B) A section made perpendicular to the body's longitudinal axis; divides the body into a superior part and an inferior part
- C) A section that divides a body part into unequal right and left parts
- D) A section that divides a body part into equal right and left halves

ANS: D

PTS: 1

TOP: Unit 01 Pre-Lab Exercise

17. Which of the following statements accurately defines *parasagittal plane*?

- A) A section made parallel to the body's longitudinal axis; divides the body into an anterior part and a posterior part
- B) A section made perpendicular to the body's longitudinal axis; divides the body into a superior part and an inferior part
- C) A section that divides a body part into unequal right and left parts
- D) A section that divides a body part into equal right and left halves

ANS: C

PTS: 1

TOP: Unit 01 Pre-Lab Exercise

18. Which of the following statements accurately defines *frontal (coronal) plane*?

- A) A section made parallel to the body's longitudinal axis; divides the body into an anterior part and a posterior part
- B) A section made perpendicular to the body's longitudinal axis; divides the body into a superior part and an inferior part
- C) A section that divides a body part into unequal right and left parts

D) A section that divides a body part into equal right and left halves

ANS: A

PTS: 1

TOP: Unit 01 Pre-Lab Exercise

19. Which of the following statements accurately defines *transverse plane*?

A) A section made parallel to the body's longitudinal axis; divides the body into an anterior part and a posterior part

B) A section made perpendicular to the body's longitudinal axis; divides the body into a superior part and an inferior part

C) A section that divides a body part into unequal right and left parts

D) A section that divides a body part into equal right and left halves

ANS: B

PTS: 1

TOP: Unit 01 Pre-Lab Exercise

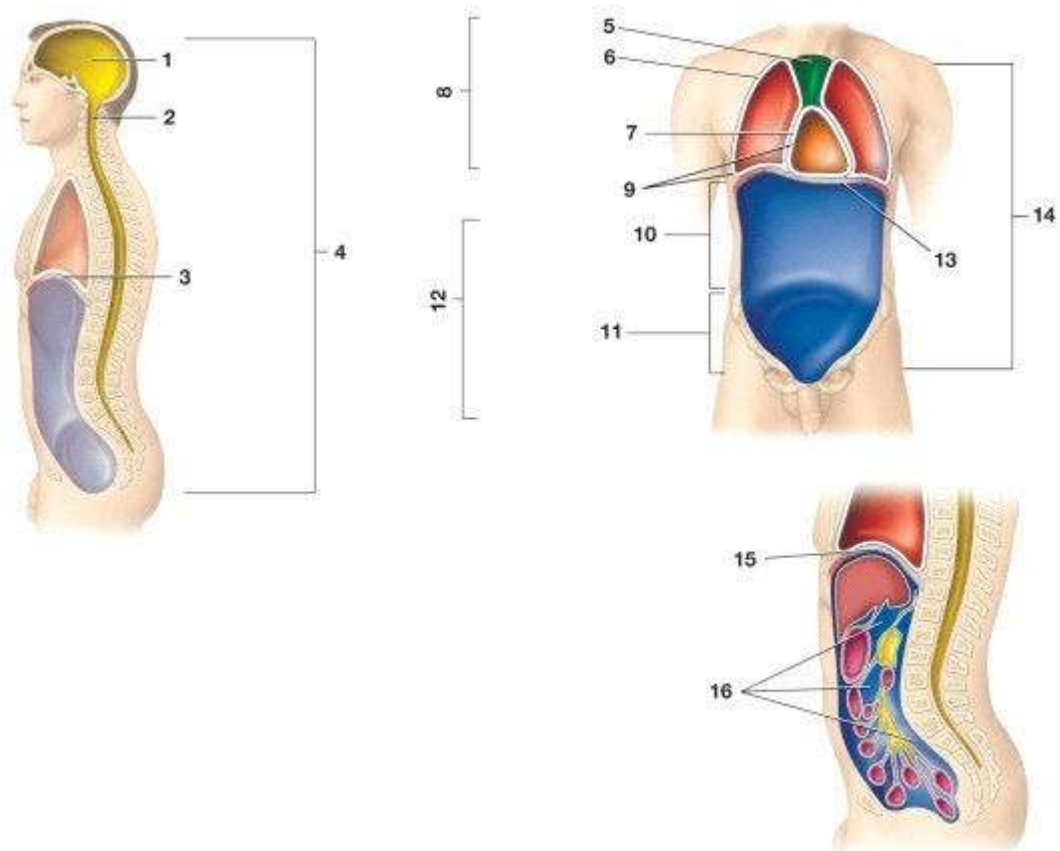


Figure 1.1 Body cavities: (A) posterior body cavity; (B) anterior body cavity; (C) peritoneal cavity (subdivision of abdominopelvic cavity).

20. In Figure 1.1, identify number 1.

A) Mediastinum

B) Cranial cavity

C) Diaphragm

D) Vertebral cavity

E) Pleural cavity

F) Peritoneal cavity

ANS: B

PTS: 1

TOP: Unit 01 Pre-Lab Exercise

21. In Figure 1.1, identify number 2.

- A) Mediastinum
- B) Cranial cavity
- C) Diaphragm
- D) Vertebral cavity
- E) Pleural cavity
- F) Peritoneal cavity

ANS: D

PTS: 1

TOP: Unit 01 Pre-Lab Exercise

22. In Figure 1.1, identify number 3.

- A) Peritoneal cavity
- B) Posterior cavity
- C) Anterior cavity
- D) Cranial cavity
- E) Pleural cavity
- F) Diaphragm

ANS: F

PTS: 1

TOP: Unit 01 Pre-Lab Exercise

23. In Figure 1.1, identify number 4.

- A) Peritoneal cavity
- B) Posterior cavity
- C) Anterior cavity
- D) Cranial cavity
- E) Pleural cavity
- F) Diaphragm

ANS: B

PTS: 1

TOP: Unit 01 Pre-Lab Exercise

24. In Figure 1.1, identify number 5.

- A) Mediastinum
- B) Thoracic cavity
- C) Diaphragm
- D) Vertebral cavity
- E) Pleural cavity
- F) Abdominopelvic cavity

ANS: A

PTS: 1

TOP: Unit 01 Pre-Lab Exercise

25. In Figure 1.1, identify number 6.

- A) Mediastinum
- B) Pericardial cavity
- C) Anterior cavity
- D) Thoracic cavity
- E) Posterior cavity
- F) Pleural cavity

ANS: F

PTS: 1

TOP: Unit 01 Pre-Lab Exercise

26. In Figure 1.1, identify number 7.

- A) Peritoneal cavity
- B) Pericardial cavity
- C) Anterior cavity
- D) Thoracic cavity
- E) Mediastinum
- F) Diaphragm

ANS: B

PTS: 1

TOP: Unit 01 Pre-Lab Exercise

27. In Figure 1.1, identify number 8.

- A) Abdominopelvic cavity
- B) Serous membranes
- C) Diaphragm
- D) Thoracic cavity
- E) Pericardial cavity
- F) Peritoneal cavity

ANS: D

PTS: 1

TOP: Unit 01 Pre-Lab Exercise

28. In Figure 1.1, identify number 9.

- A) Vertebral cavity
- B) Thoracic cavity
- C) Pericardial cavity
- D) Anterior cavity
- E) Pleural cavity
- F) Serous membranes

ANS: F

PTS: 1

TOP: Unit 01 Pre-Lab Exercise

29. In Figure 1.1, identify number 10.

- A) Mediastinum
- B) Thoracic cavity
- C) Diaphragm
- D) Vertebral cavity
- E) Pleural cavity
- F) Abdominal cavity

ANS: F

PTS: 1

TOP: Unit 01 Pre-Lab Exercise

30. In Figure 1.1, identify number 11.

- A) Pelvic cavity
- B) Anterior cavity
- C) Diaphragm
- D) Vertebral cavity
- E) Posterior cavity
- F) Abdominopelvic cavity

ANS: C

PTS: 1

TOP: Unit 01 Pre-Lab Exercise

31. In Figure 1.1, identify number 12.

- A) Mediastinum
- B) Thoracic cavity
- C) Diaphragm
- D) Vertebral cavity
- E) Pleural cavity
- F) Abdominopelvic cavity

ANS: F

PTS: 1

TOP: Unit 01 Pre-Lab Exercise

32. In Figure 1.1, identify number 13.

- A) Abdominopelvic cavity
- B) Pericardial cavity
- C) Mediastinum
- D) Vertebral cavity
- E) Pleural cavity
- F) Diaphragm

ANS: F

PTS: 1

TOP: Unit 01 Pre-Lab Exercise

33. In Figure 1.1, identify number 14.

- A) Pelvic cavity
- B) Anterior cavity
- C) Diaphragm
- D) Vertebral cavity
- E) Posterior cavity
- F) Abdominopelvic cavity

ANS: B

PTS: 1

TOP: Unit 01 Pre-Lab Exercise

34. In Figure 1.1, identify number 15.

- A) Peritoneal cavity
- B) Thoracic cavity
- C) Diaphragm
- D) Vertebral cavity
- E) Serous membranes
- F) Abdominopelvic cavity

ANS: C

PTS: 1

TOP: Unit 01 Pre-Lab Exercise

35. In Figure 1.1, identify number 16.

- A) Peritoneal cavity
- B) Thoracic cavity
- C) Diaphragm
- D) Vertebral cavity
- E) Serous membranes
- F) Abdominopelvic cavity

ANS: A

PTS: 1

TOP: Unit 01 Pre-Lab Exercise

36. Which of the following best describes anatomical position?

- A) Body facing forward, toes pointing forward, palms facing backward
- B) Body, toes, and palms facing backward
- C) Body facing forward, arms at the sides, palms facing forward
- D) Body facing backward and palms facing outward

ANS: C PTS: 1 TOP: Unit 01 Check Your Recall

37. Which of the following statements accurately defines *distal*?

- A) Toward the back of the body
- B) Farther from the point of origin (e.g., of a limb)
- C) Closer to the point of origin (e.g., of a limb)
- D) Away from the body's midline
- E) Toward the head
- F) Away from the head/toward the tail

ANS: B PTS: 1 TOP: Unit 01 Check Your Recall

38. Which of the following statements accurately defines *lateral*?

- A) Toward the back of the body
- B) Closer to the point of origin (e.g., of a limb)
- C) Farther from the point of origin (e.g., of a limb)
- D) Away from the surface/toward the body's interior
- E) Away from the body's midline
- F) Toward the body's midline

ANS: E PTS: 1 TOP: Unit 01 Check Your Recall

39. Which of the following statements accurately defines *anterior*?

- A) Toward the back of the body
- B) Away from the surface/toward the body's interior
- C) Closer to the point of origin (e.g., of a limb)
- D) Toward the head
- E) Away from the head/toward the tail
- F) Toward the front of the body

ANS: F PTS: 1 TOP: Unit 01 Check Your Recall

40. Which of the following statements accurately defines *proximal*?

- A) Farther from the point of origin (e.g., of a limb)
- B) Away from the surface/toward the body's interior
- C) Closer to the point of origin (e.g., of a limb)
- D) Away from the body's midline
- E) Toward the body's midline
- F) Toward the surface/skin

ANS: C PTS: 1 TOP: Unit 01 Check Your Recall

41. Which of the following statements accurately defines *inferior*?

- A) Away from the head/toward the tail
- B) Toward the back of the body
- C) Farther from the point of origin (e.g., of a limb)

- D) Away from the surface/toward the body's interior
- E) Away from the body's midline
- F) Toward the surface/skin

ANS: A PTS: 1 TOP: Unit 01 Check Your Recall

42. Which of the following statements accurately defines *deep*?

- A) Toward the body's midline
- B) Farther from the point of origin (e.g., of a limb)
- C) Away from the surface/toward the body's interior
- D) Away from the body's midline
- E) Closer to the point of origin (e.g., of a limb)
- F) Toward the front of the body

ANS: C PTS: 1 TOP: Unit 01 Check Your Recall

43. Which of the following statements accurately defines *superficial*?

- A) Farther from the point of origin (e.g., of a limb)
- B) Closer to the point of origin (e.g., of a limb)
- C) Away from the body's midline
- D) Toward the body's midline
- E) Toward the front of the body
- F) Toward the surface/skin

ANS: F PTS: 1 TOP: Unit 01 Check Your Recall

44. Which of the following statements accurately defines *posterior*?

- A) Toward the back of the body
- B) Farther from the point of origin (e.g., of a limb)
- C) Toward the surface/skin
- D) Away from the surface/toward the body's interior
- E) Away from the body's midline
- F) Away from the head/toward the tail

ANS: A PTS: 1 TOP: Unit 01 Check Your Recall

45. Which of the following statements accurately defines *medial*?

- A) Farther from the point of origin (e.g., of a limb)
- B) Away from the surface/toward the body's interior
- C) Away from the body's midline
- D) Toward the body's midline
- E) Away from the head/toward the tail
- F) Toward the surface/skin

ANS: D PTS: 1 TOP: Unit 01 Check Your Recall

46. Which of the following statements accurately defines *superior*?

- A) Farther from the point of origin (e.g., of a limb)
- B) Away from the surface/toward the body's interior
- C) Away from the body's midline
- D) Toward the head

- E) Toward the body's midline
- F) Toward the front of the body

ANS: D

PTS: 1

TOP: Unit 01 Check Your Recall

47. Which of the following is a correct use of a directional term?

- A) The ankle is inferior to the knee.
- B) The sternum is superior to the abdomen.
- C) The bone is deep to the muscle.
- D) The ear is lateral to the mouth.

ANS: D

PTS: 1

TOP: Unit 01 Check Your Recall

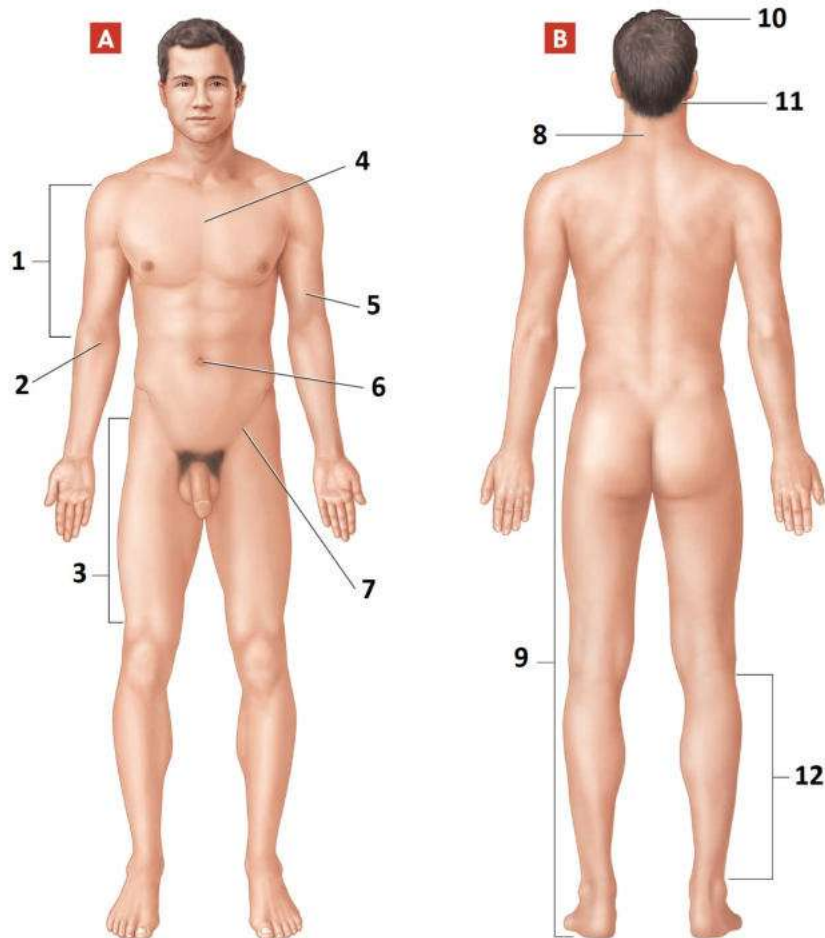


Figure 1.16 Human body in anatomical position: (A) anterior view; (B) posterior view.

48. In Figure 1.16, identify number 1.

- A) Arm
- B) Forearm
- C) Antecubital region
- D) Brachial region
- E) Antecubital region
- F) Sternal region
- G) Axillary region

ANS: A

PTS: 1

TOP: Unit 01 Check Your Recall

49. In Figure 1.16, identify number 2.

- A) Occipital region
- B) Cephalic region
- C) Antecubital region
- D) Brachial region
- E) Sternal region
- F) Inguinal region
- G) Umbilical region

ANS: C

PTS: 1

TOP: Unit 01 Check Your Recall

50. In Figure 1.16, identify number 3.

- A) Leg
- B) Femoral region
- C) Tarsal region
- D) Otic region
- E) Patellar region
- F) Thigh
- G) Popliteal region

ANS: F

PTS: 1

TOP: Unit 01 Check Your Recall

51. In Figure 1.16, identify number 4.

- A) Digital region
- B) Axillary region
- C) Carpal region
- D) Scapular region
- E) Nuchal region
- F) Brachial region
- G) Sternal region

ANS: G

PTS: 1

TOP: Unit 01 Check Your Recall

52. In Figure 1.16, identify number 5.

- A) Brachial region
- B) Carpal region
- C) Digital region
- D) Sternal region
- E) Nuchal region
- F) Scapular region
- G) Axillary region

ANS: A

PTS: 1

TOP: Unit 01 Check Your Recall

53. In Figure 1.16, identify number 6.

- A) Pubic region
- B) Femoral region
- C) Abdominal region
- D) Umbilical region

- E) Inguinal region
- F) Sternal region
- G) Otic region

ANS: D

PTS: 1

TOP: Unit 01 Check Your Recall

54. In Figure 1.16, identify number 7.

- A) Inguinal region
- B) Popliteal region
- C) Femoral region
- D) Umbilical region
- E) Pubic region
- F) Patellar region
- G) Pubic region

ANS: A

PTS: 1

TOP: Unit 01 Check Your Recall

55. In Figure 1.16, identify number 8.

- A) Carpal region
- B) Digital region
- C) Crural region
- D) Sural region
- E) Lumbar region
- F) Thoracic region
- G) Cervical region

ANS: G

PTS: 1

TOP: Unit 01 Check Your Recall

56. In Figure 1.16, identify number 9.

- A) Leg
- B) Thigh
- C) Gluteal region
- D) Femoral region
- E) Lumbar region
- F) Lower limb
- G) Otic region

ANS: F

PTS: 1

TOP: Unit 01 Check Your Recall

57. In Figure 1.16, identify number 10.

- A) Orbital region
- B) Buccal region
- C) Cephalic region
- D) Cervical region
- E) Otic region
- F) Occipital region
- G) Frontal region

ANS: C

PTS: 1

TOP: Unit 01 Check Your Recall

58. In Figure 1.16, identify number 11.